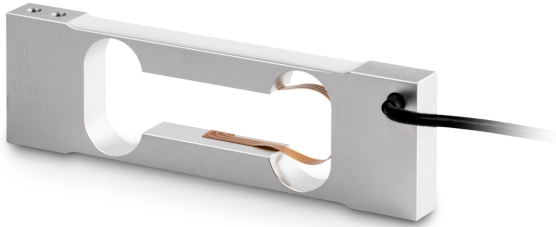


KERN CP 1500-0Y4

KERN

Single-point load cell made of anodised aluminium



Construction

Design	Singlepoint load cell
Dimension (W×D×H)	110×33×10 mm
Dimensions weighing platform (W×D×H)	120×120×0 mm
Material	aluminium
Cable length	0,45 m
Mounting - force application	2 × threaded hole M3
Mounting - force dissipation	2 × threaded hole M3

Functions

IP protection - complete device	IP65
---------------------------------	------

Environmental conditions

Use temperature [Min]	-10 °C
Use temperature [Max]	40 °C
Ambient temperature [Min]	-20 °C
Ambient temperature [Max]	50 °C
Storage temperature [Min]	-30 °C
Storage temperature [Max]	60 °C

Packing & Shipping

Readability force [d] (N)	1 d
Dimensions packaging (W×D×H)	120×50×35 mm
Net weight	0,071 kg
Shipping method	Parcel service
Net weight approx.	0,10 kg
Gross weight approx.	0,10 kg
Shipping weight	0,1 kg

Services (optional)

Article number for DAkkS calibration (compressive force)	963-261V
--	----------

Pictograms

STANDARD



OPTION



Category	
Brand	Sauter
Product category	Measuring cell
Product group	Load cell
Product family	CP Y4

Measuring System	
Weighing capacity [Max]	1,5 kg
Load cell connection	4-wire
Load cell OIML class	C3
Load cell - Resolution (verifiable)	3000 e
Load cell - characteristic value - nominal	0,9 mV/V
Load cell - characteristic value - variance	0,1 mV/V
Load cell - Combined error	0,017%
Load cell - Dead load [Min] (%)	0%
Measuring applications	mass
Load cell - Input resistance - nominal	405 Ω
Load cell - Output resistance - nominal	350 Ω
Load cell - Isolation resistance - [Min]	5000 MΩ
Load cell - Recommended excitation voltage [Min]	9 V
Load cell - Recommended excitation voltage [Max]	12 V
Load cell - Input resistance - variance	6 Ω
Load cell - Output resistance - variance	3 Ω
Directions of force	compression

Approval	
CE mark	✓